

PART OF S.E. 1/4 OF SEC. 14, & PART OF N.E. 1/4 OF SEC. 23, T.5N., R.1W., S.L.B. & M. 171

BONNEVILLE TERRACE SUBDIVISION NO. 2

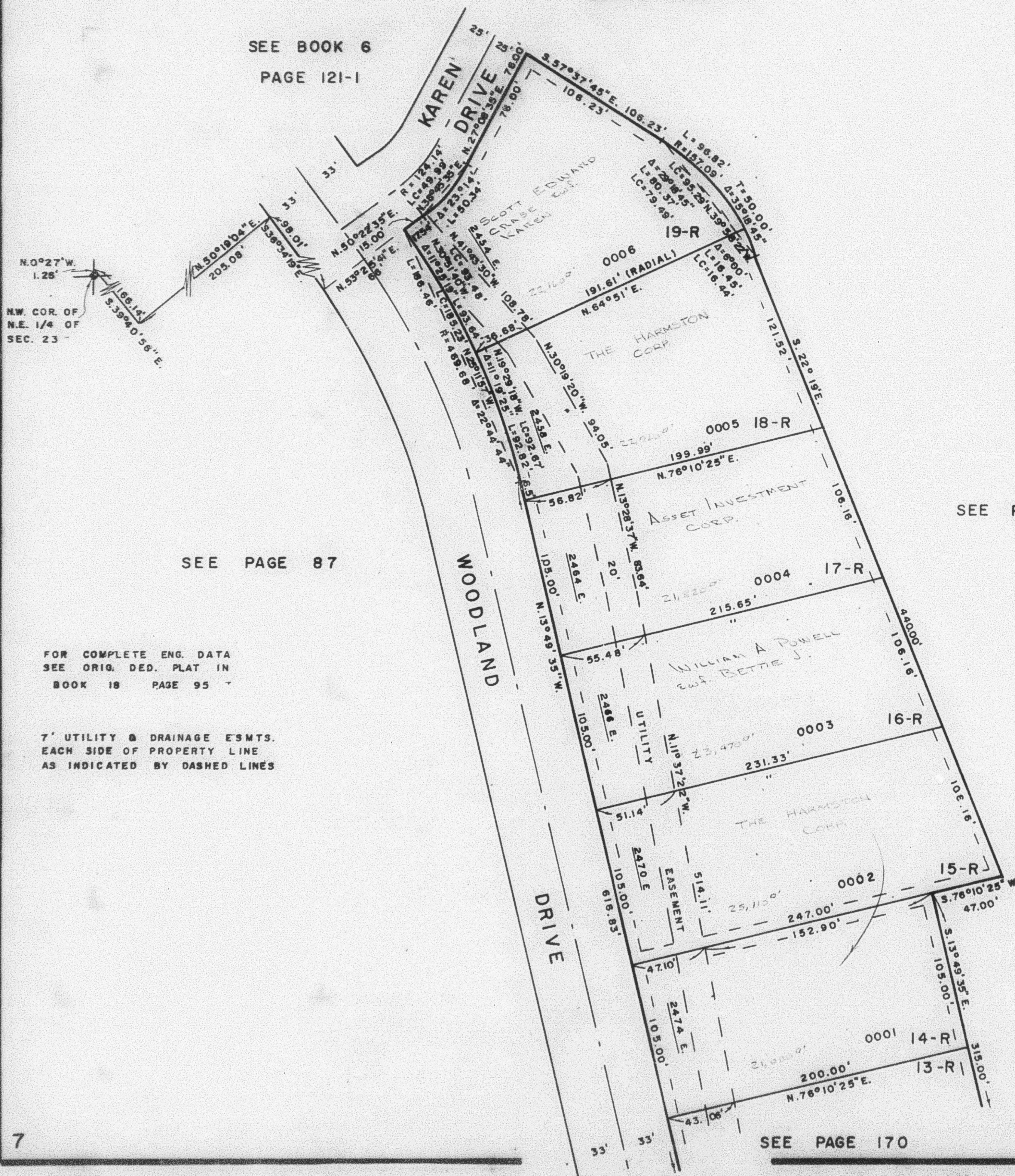
TAXING UNIT: 58

IN WEBER COUNTY

PREFIX: 07-171

SCALE 1"=50'

SEE BOOK 6
PAGE 121-1



SEE PAGE 87

SEE PAGE 87

SEE PAGE 170

W.F.J. 6-75